



SFF2002CT/TT THRU SFF2006CT/TT

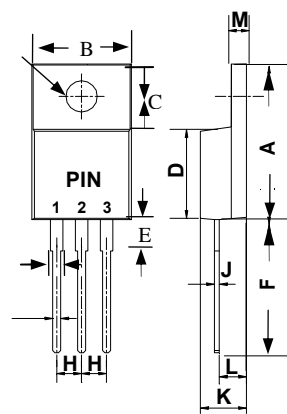
Superfast Recovery Rectifiers

TO-220AB

FEATURES

- Low profile package
- Glass Passivated Chip Junction
- Easy to pick and place
- High forward surge capability
- High temperature soldering : 260°C/10 seconds at terminals
- Lead free in comply with EU ROHS 2011/65/EU directives

ROHS
COMPLIANT

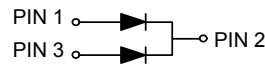


TO-220AB		
DIM.	MIN.	MAX.
A	15.00	16.00
B	9.90	10.40
C	6.35	6.65
D	8.55	9.35
E	3.00	---
F	12.80	---
G	1.10	1.40
H	2.45	2.65
I	0.45	0.95
J	0.35	0.45
K	4.35	4.75
L	2.55	3.15
M	1.25	1.45
O	∅3.65	∅3.95

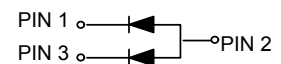
All Dimensions in millimeter

Mechanical Data

- Case : TO-220AB
- Terminals : Solder plated, solderable per MIL-STD-750, Method 2026
- Polarity : Cathode line denotes the cathode end
- Mounting Position : Any



共阴CT



共阳TT

MAXIMUM RATINGS AND ELECTRICAL CHARACTERISTICS

Rating at 25°C ambient temperature unless otherwise specified.

Single phase, half wave ,60Hz, resistive or inductive load. For capacitive load, derate current by 20%

CHARACTERISTICS	Symbols	SFF2002CT/TT	SFF2003CT/TT	SFF2004CT/TT	SFF2006CT/TT	UNIT
Maximum Recurrent Peak Reverse Voltage	V _{RRM}	200	300	400	600	V
Maximum RMS Bridge Input Voltage	V _{RMS}	140	210	280	420	V
Maximum DC Blocking Voltage	V _{DC}	200	300	400	600	V
Maximum Average Forward Rectified Current	I _(AV)	20.0				A
Peak Forward Surge Current 8.3ms Single Half Sine Wave Superimposed on Rated Load (JEDEC Method)	I _{FSM}	160				A
Maximum Forward Voltage at 10A DC	V _F	1.0	1.30		1.70	V
Maximum DC Reverse Current T _A =25°C	I _R	10				μA
at Rated DC Blocking Voltage T _A =125°C		400				
Maximum Reverse Recovery Time (Note1)	TRR	35				ns
Typical Thermal Resistance	R _{θJC}	2.5				°C/W
Operating Temperature Range	T _J	-55 to +150				°C
Storage Temperature Range	T _{STG}	-55 to +150				°C

NOTES: 1. Measured with I_F = 0.5 A, I_R = 1 A, I_{rr} = 0.25 A





SFF2002CT/TT THRU SFF2006CT/TT

Superfast Recovery Rectifiers

Characteristic Curves ($T_A=25^\circ\text{C}$ unless otherwise noted)

FIG.1- MAXIMUM FORWARD CURRENT DERATING CURVE

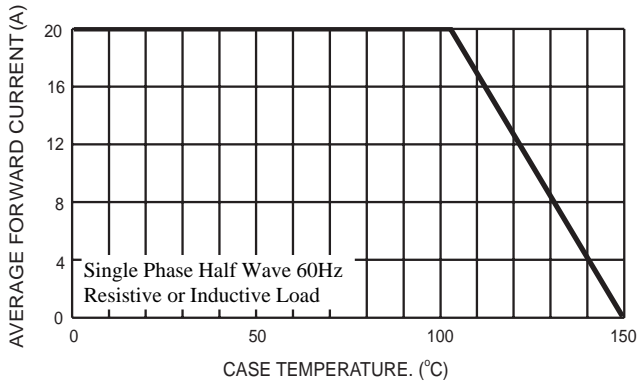


FIG.2- TYPICAL REVERSE CHARACTERISTICS

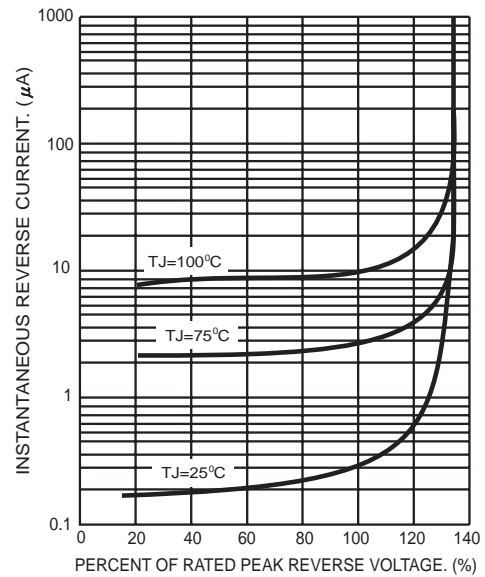


FIG.3- MAXIMUM NON-REPETITIVE FORWARD SURGE CURRENT PER LEG

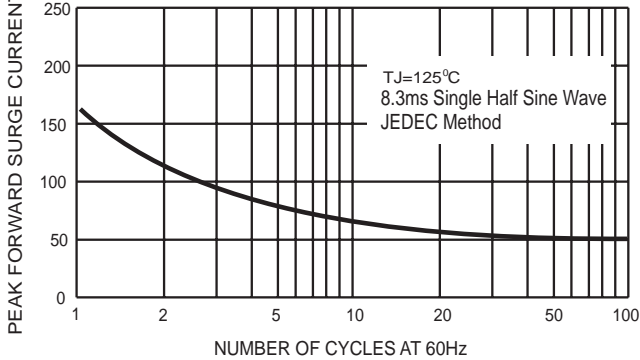


FIG.5- TYPICAL FORWARD CHARACTERISTICS PER LEG

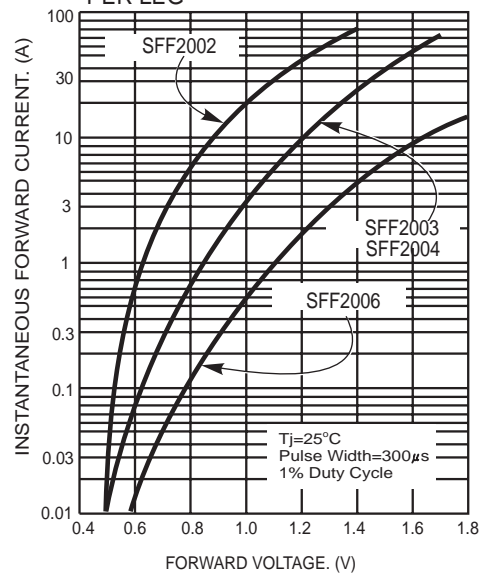


FIG.4- TYPICAL JUNCTION CAPACITANCE PER LEG

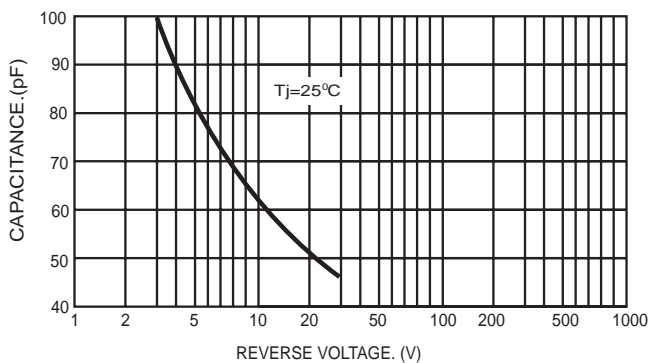
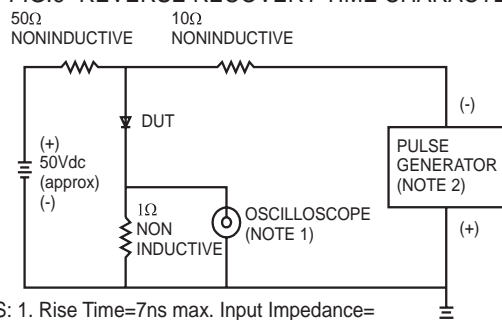


FIG.6- REVERSE RECOVERY TIME CHARACTERISTIC AND TEST CIRCUIT DIAGRAM



- NOTES: 1. Rise Time=7ns max. Input Impedance=1 megohm 22pf
2. Rise Time=10ns max. Source Impedance=50 ohms

