

### SS22 (SS22A) THRU SS220 (SS220A)

#### Surface Mount Schottky Rectifier

#### Essential information; basic information

##### Features

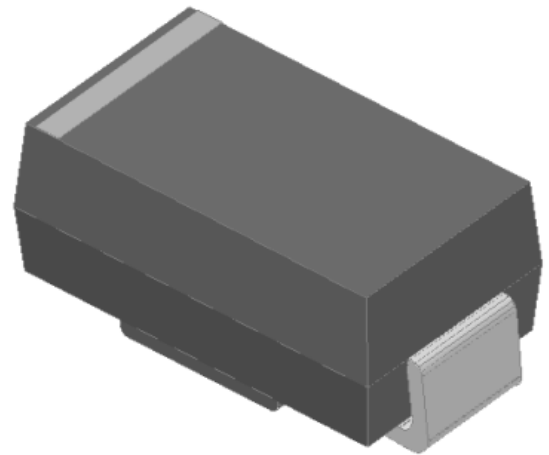
- Low profile package
- Ideal for automated placement
- Guardring for overvoltage protection
- Low power losses, high efficiency
- High forward surge capability
- Meets MSL level 1, per J-STD-020, LF maximum peak of 260 °C

##### Typical Applications

For use in low voltage high frequency inverters, freewheeling, DC/DC converters, and polarity protection applications.

##### Mechanical Data

- Package: DO-214AC (SMA)
- Molding compound meets UL 94 V-0 flammability rating, RoHS-compliant
- Terminals: Tin plated leads, solderable per J-STD-002 and JESD22-B102
- Polarity: Cathode line denotes the cathode end



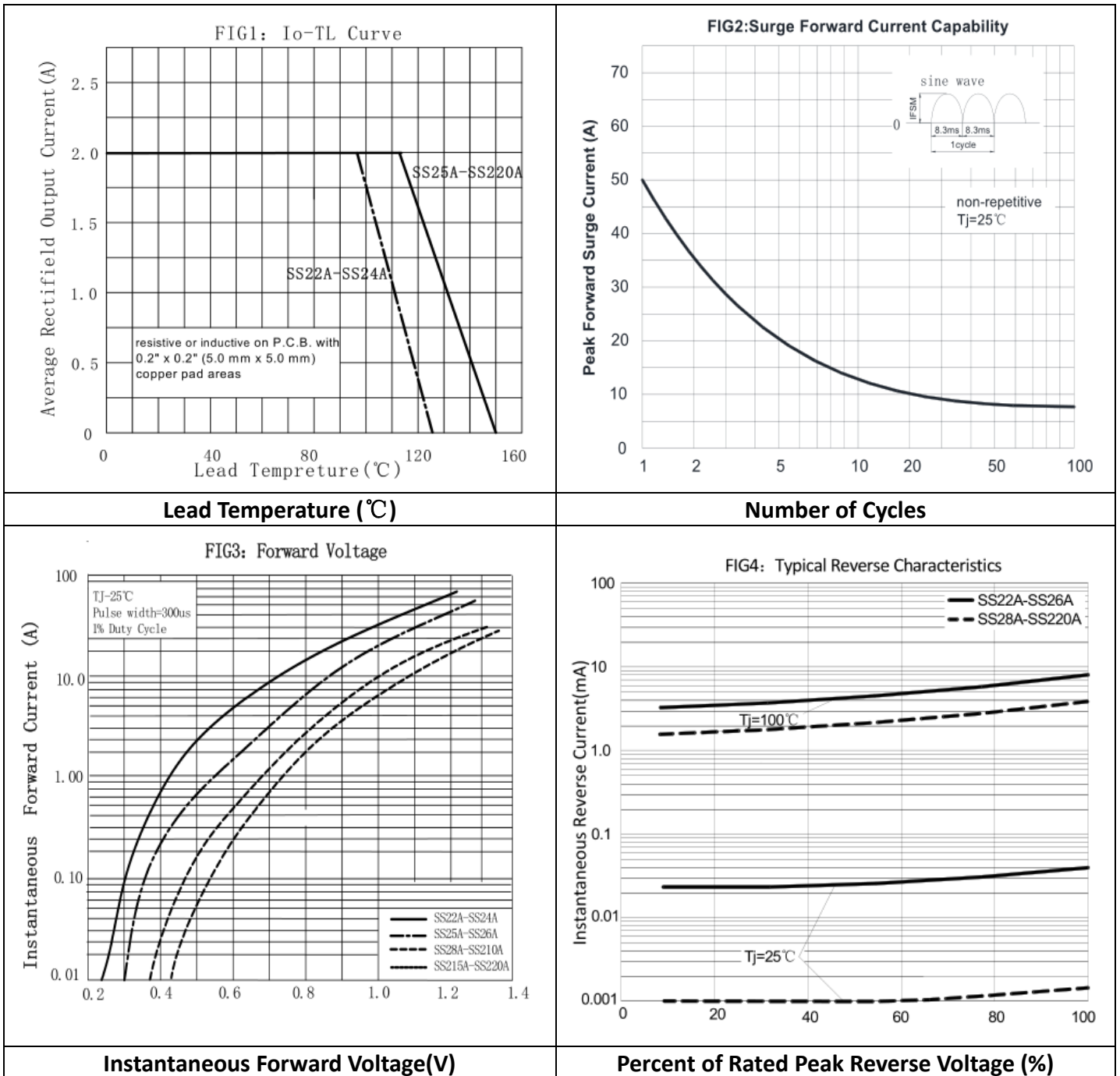
#### Maximum Ratings (Ta=25°C Unless otherwise specified)

PARAMETER	SYMBOL	UNIT	SS22	SS24	SS26	SS28	SS210	SS215	SS220
			SS22A	SS24A	SS26A	SS28A	SS210A	SS215A	SS220A
Maximum Repetitive peak reverse voltage	VRRM	V	20	40	60	80	100	150	200
Average rectified output current@60Hz sine wave, resistance load, TL (Fig.1)	IO	A	2.0						
Forward Surge Current (Non-repetitive)@60Hz Half-sine wave, 1 cycle, Tj=25°C	IFSM	A	50						
Storage temperature	Tstg	°C	-55 ~ +150						
Junction temperature	Tj	°C	-55 ~ +125			-55 ~ +150			
Maximum instantaneous forward voltage drop per diode	VF (IFM=2.0A)	V	0.6		0.7	0.85		0.95	
Maximum DC reverse current at rated DC blocking voltage per diode @VRM=VRRM	IR (Tj=25°C)	mA	0.5			0.1			
	IR (Tj=100°C)		10			5			

PARAMETER	SYMBOL	UNIT	SS22	SS24	SS26	SS28	SS210	SS215	SS220
Alternate Name			SS22A	SS24A	SS26A	SS28A	SS210A	SS215A	SS220A
Typical Thermal resistance	RθJ-A	°C/W	75						
	RθJ-L		17						

Note: (1) Thermal resistance from junction to ambient and from junction to lead mounted on P.C.B. with 0.2" x 0.2" (5.0 mm x 5.0 mm) copper pad areas

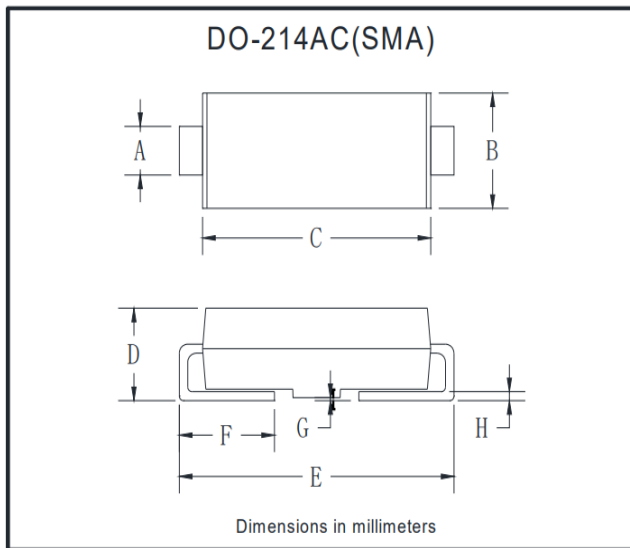
### Characteristics (Typical)



### Ordering Information (Example)

type specification	manner of packin	MINIMUM PACKAGE(pcs)	INNER BOX QUANTITY(pcs)	OUTER CARTON QUANTITY(pcs)	DELIVERY MODE
SS22-SS220 (SMA)	T/B	2000	10000	100000	7" reel
		5000	10000	100000	11" reel
		5000	10000	100000	13" reel

### Outline Dimensions



DO-214AC(SMA)		
Dim	Min	Max
A	1.25	1.58
B	2.40	2.83
C	4.06	4.75
D	1.90	2.30
E	4.93	5.28
F	0.76	1.41
G	0.08	0.20
H	0.15	0.31

### Disclaimer

The information presented in this document is for reference only. right to make changes without notice for the specification of the products displayed herein to improve reliability, function or designor otherwise.

The product listed herein is designed to be used with ordinary electronic equipment or devices, and not designed to be used withequipment or devices which require high level of reliability and the malfunction of with would directly endanger human life (such asmedical instruments, transportation equipment, aerospace machinery, nuclear-reactor controllers, fuel controllers and other safetydevices), chenglitai or anyone on its behalf, assumes no responsibility or liability for any damages resulting from such improper useof sale.

This publication supersedes & replaces all information previously supplied. or consult your nearest chenglitai's sales office for further assistance.